

Communities in Action: Pathways to Health Equity

National Academies of
Science, Engineering, and Medicine

New Partners for Smart Growth and
Equitable Development

Robert García, JD

Founding Director and Counsel, The City Project
Assistant Professor, Charles Drew University of
Medicine and Science

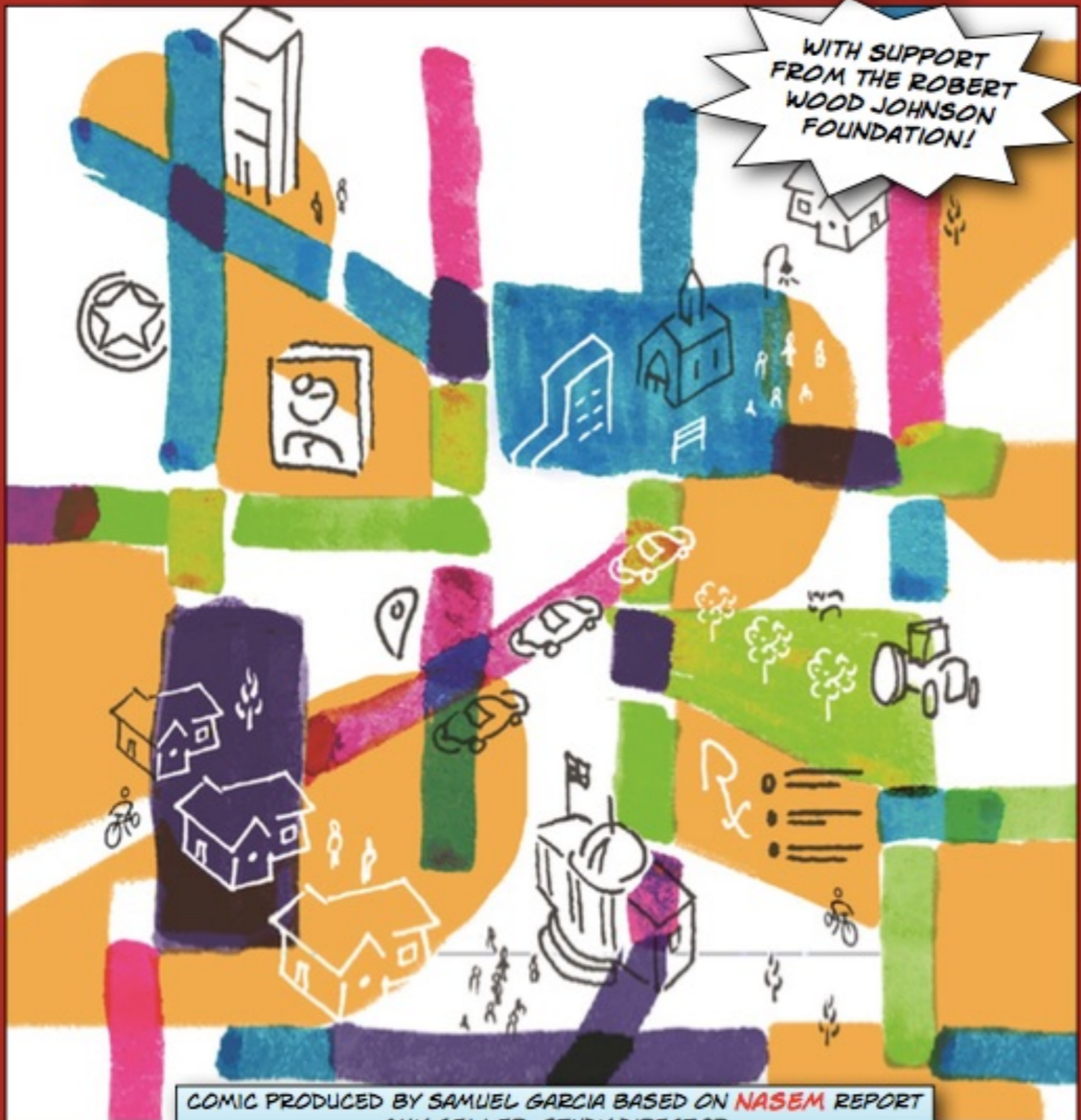
www.cityprojectca.org

hello@cityprojectca.org

**TAKE
ACTION**
SERIES

COMMUNITIES IN ACTION: PATHWAYS TO HEALTH EQUITY

NATIONAL ACADEMIES OF SCIENCES, ENGINEERING, AND MEDICINE



COMIC PRODUCED BY SAMUEL GARCIA BASED ON **NASEM** REPORT
AMY GELLER, STUDY DIRECTOR

THE REPORT IN BRIEF...

- REVIEWS THE STATE OF **HEALTH DISPARITIES** IN THE UNITED STATES AND THEIR ROOT CAUSES...
- ID'S **COMMUNITY-BASED SOLUTIONS** TO ADDRESS THEM...
- ID'S MAJOR ELEMENTS OF EFFECTIVE SOLUTIONS...
- RECOMMENDS KEY RESEARCH NEEDS TO **REDUCE HEALTH DISPARITIES** AND **PROMOTE HEALTH EQUITY**.



- A. HEALTH EQUITY IS CRUCIAL FOR THE **WELLBEING** AND **VIBRANCY** OF COMMUNITIES.
- B. HEALTH IS A PRODUCT OF MULTIPLE DETERMINANTS.
- C. HEALTH INEQUALITIES ARE IN LARGE PART A RESULT OF **POVERTY, STRUCTURAL RACISM, AND DISCRIMINATION**.
- D. **COMMUNITIES** HAVE AGENCY TO PROMOTE HEALTH EQUITY.
- E. SUPPORTIVE **PUBLIC AND PRIVATE POLICIES AND PROGRAMS** FACILITATE COMMUNITY ACTION.
- F. THE **COLLABORATION AND ENGAGEMENT** OF NEW AND **DIVERSE PARTNERS** IS ESSENTIAL TO PROMOTING HEALTH EQUITY.
- G. **TOOLS AND KNOWLEDGE** EXIST TO TRANSLATE KNOWLEDGE INTO **ACTION** AND TO PROMOTE HEALTH EQUITY...
- H. RECOMMENDATIONS PROMOTE A **CULTURE OF HEALTH**.



COMMITTEE ON COMMUNITY-BASED SOLUTIONS TO PROMOTE HEALTH EQUITY IN THE U.S.

HEALTH EQUITY AND CIVIL RIGHTS...



WE ACT RALLIES FOR ENVIRONMENTAL + CLIMATE JUSTICE USING CIVIL RIGHTS TOOLS.

FOUNDATIONS AND OTHER FUNDERS SHOULD SUPPORT COMMUNITY INTERVENTIONS TO PROMOTE HEALTH EQUITY BY SUPPORTING EDUCATION, COMPLIANCE, AND ENFORCEMENT RELATED TO CIVIL RIGHTS LAWS.

CIVIL RIGHTS APPROACHES HAVE HELPED MITIGATE NEGATIVE IMPACTS OF DISCRIMINATION, PROMOTE HEALTH EQUITY, AND GUARD AGAINST UNJUSTIFIED DISCRIMINATORY IMPACTS THAT AFFECT HEALTH.

GUIDING EQUITY ANALYSIS...

- DESCRIBE THE PROGRAM OR ACTIVITY.
- ANALYZE THE BURDENS AND BENEFITS FOR **ALL PEOPLE**.
- ANALYZE ALTERNATIVES.
- INCLUDE STAKEHOLDERS, INCLUDING PEOPLE OF COLOR AND LOW-INCOME PEOPLE IN THE DECISION MAKING PROCESS.
- IMPLEMENT A PLAN TO PROMOTE EQUITY, ADDRESS DISPARITIES, AND **AVOID DISCRIMINATION**.



The National Academies of
SCIENCES • ENGINEERING • MEDICINE

**COMMITTEE ON COMMUNITY-BASED SOLUTIONS
TO PROMOTE HEALTH EQUITY IN
THE UNITED STATES...**

JAMES N. WEINSTEIN (CHAIR)

HORTENSIA DE LOS ANGELES AMARO

ELIZABETH BACA

B. NED CALONGE

BECHARA CHOUCAIR

ALISON EVANS CUELLAR

ROBERT H. DUGGER

CHANDRA FORD

ROBERT GARCIA

HELENE D. GAYLE

ANDREW GRANT-THOMAS

SISTER CAROL KEEHAN

CHRISTOPHER LYONS

KENT MCGUIRE

JULIE MORITA

TIA POWELL

LISBETH SCHORR

NICK TILSEN

WILLIAM WYMAN

SEE THE
FULL REPORT,
HIGHLIGHTS, AND MORE AT
[WWW.NATIONALACADEMIES.ORG/
PROMOTEHEALTHEQUITY](http://WWW.NATIONALACADEMIES.ORG/PROMOTEHEALTHEQUITY)

THIS IS THE FIRST IN A
SERIES OF REPORTS FROM
THE NATIONAL ACADEMY OF
MEDICINE'S CULTURE OF
HEALTH PROGRAM!

LEARN MORE AT NAM.EDU/CULTUREOFHEALTH



Presidential Memorandum Promoting Diversity and Inclusion in Our National Parks, National Forests, and Other Public Lands and Waters (Jan. 2017)

In brief:

Increase diversity and inclusion in the workforce

Expand training on diversity, inclusion, and unconscious bias

Ensure that state, local, and private recipients of public funding improve visitation, access, and recreation for diverse populations

Develop an action plan within one year

Transportation and interpretation EKIAP

We heard from the community. Too many children in L.A. County, especially children of color, don't have access to parks where they can run free, breathe fresh air, experience nature, and learn about their environment.

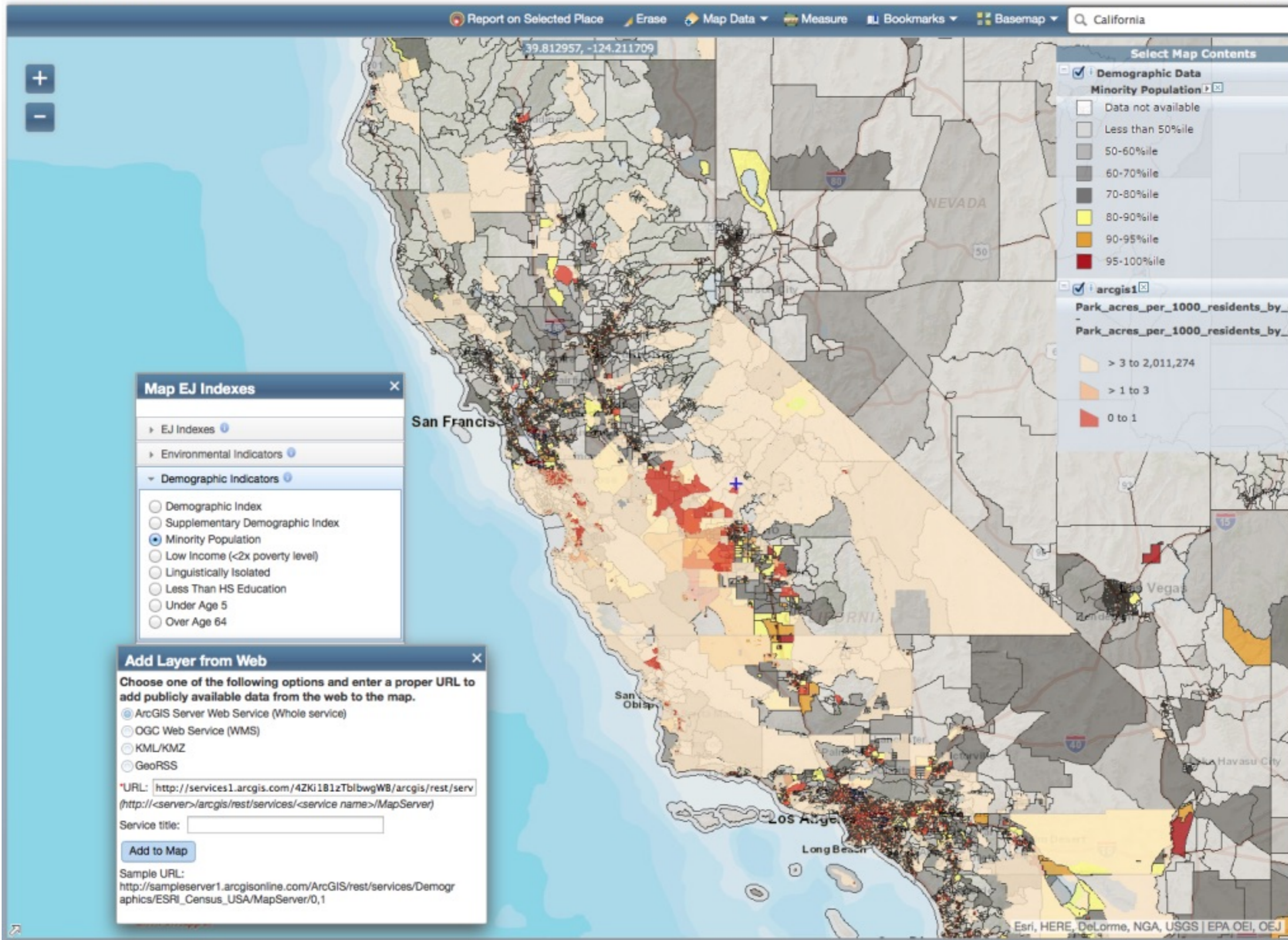
This is an issue of social justice.

Because it's not enough to have this awesome natural wonder within your sight—you have to be able to access it.

President Barack Obama
San Gabriel Mountains
National Monument Dedication
October 2014

My commitment to conservation . . . is about working with communities to open up our glorious heritage to everybody — young and old, black, white, Latino, Asian, Native American — to make sure everybody can experience these incredible gifts.

President Barack Obama
San Gabriel Mountains
National Monument Dedication
October 2014





A significant portion of the LA River falls within the "Epicenter of Cancer Risk" in terms of air toxics.

Source: *Hidden Hazards: A Call to Action for Healthy, Livable Communities*, Los Angeles Collaborative for Environmental Health and Justice, Liberty Hill Foundation, 2010

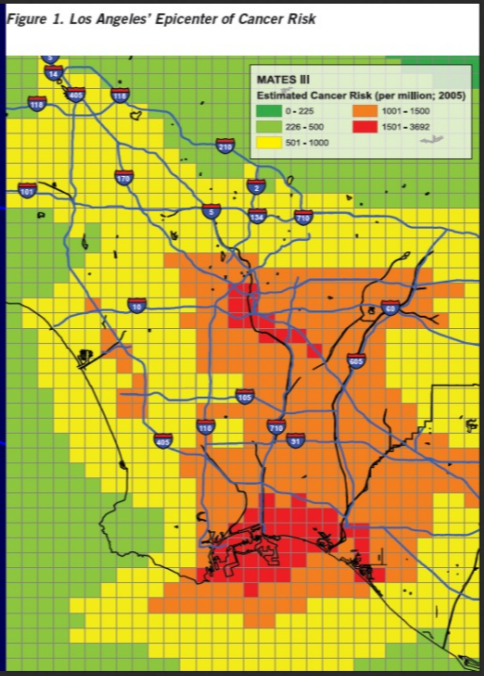
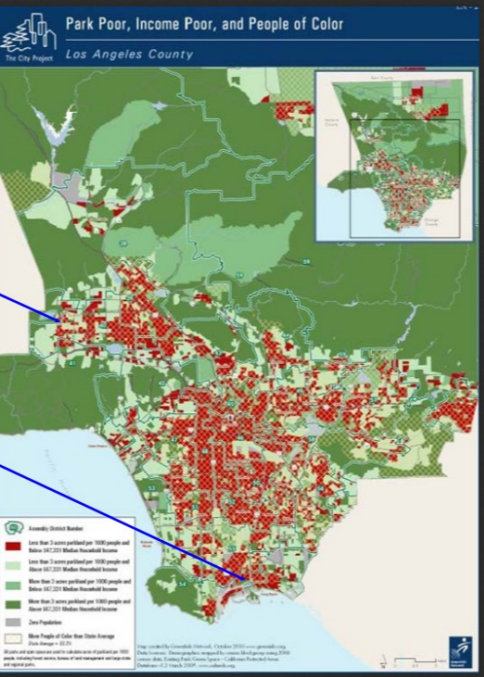


Figure 1. Los Angeles' Epicenter of Cancer Risk



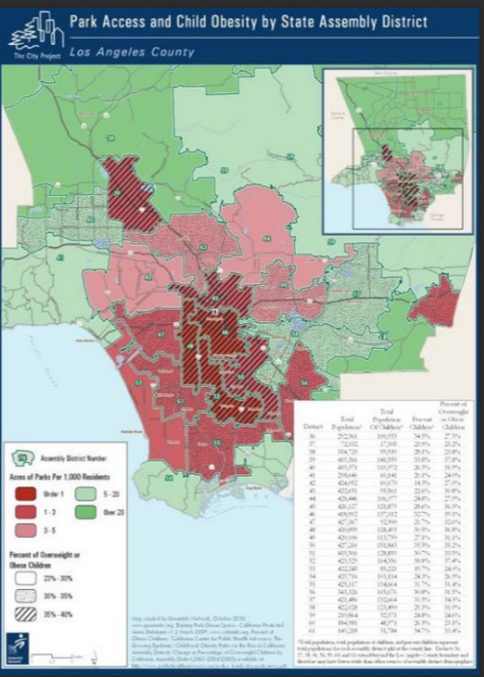
The LA River flows through many low-income communities of color that lack access to parks.

Source: The City Project, www.cityprojectca.org

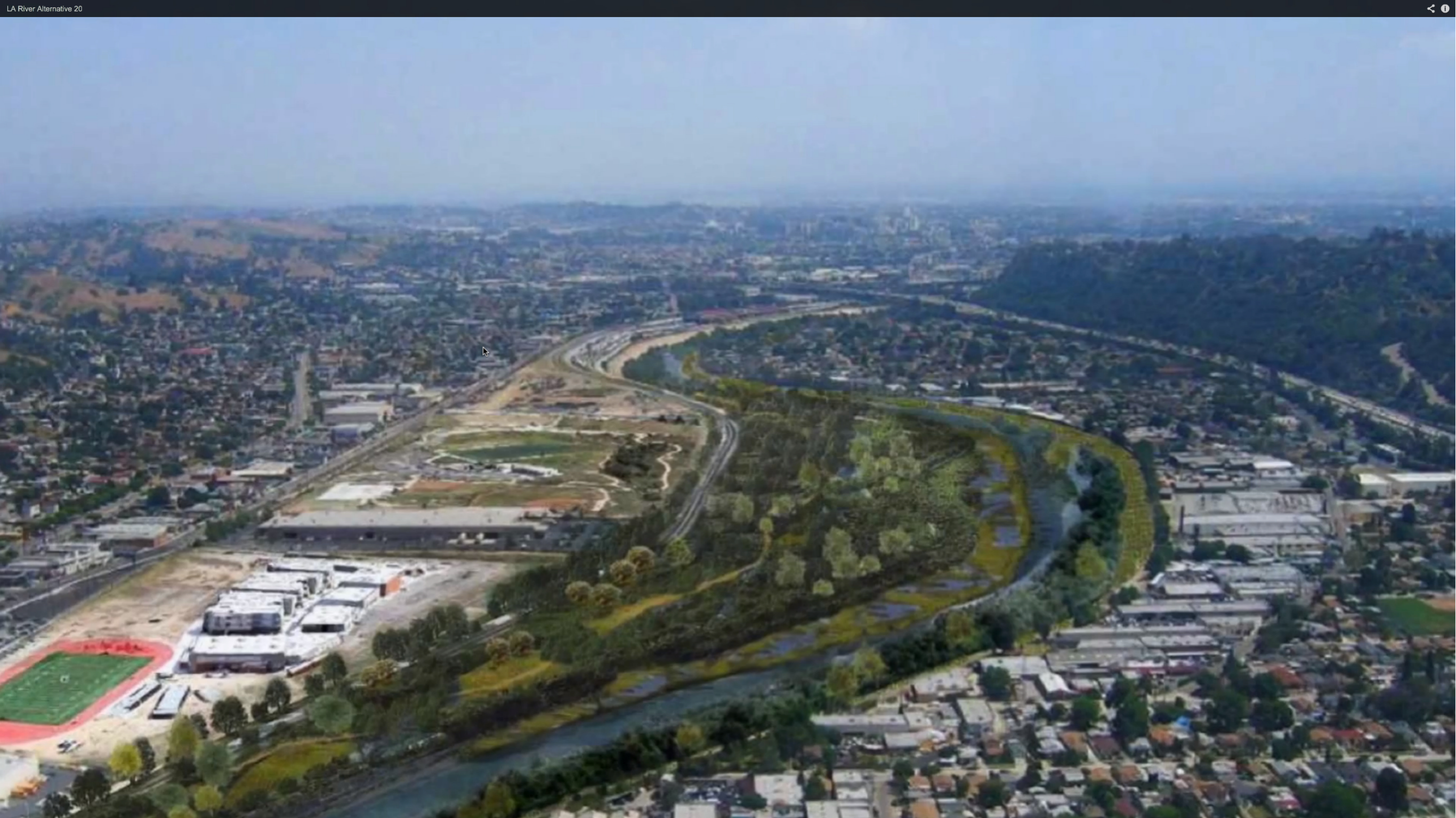


The LA River flows through many communities with high incidences of childhood obesity.

Source: The City Project, www.cityprojectca.org



L.A. River US Army Corps of Engineers Best Practice Revitalizing the L.A. River



USACE L.A. River final plan \$1.4 billion

- 1. There are not enough parks, especially for people of color and low income people.**
- 2. This contributes to health disparities based on race, color, national origin, and income.**
- 3. Civil rights and environmental justice requires agencies to alleviate these disparities.**

President's Executive Order 12898

Title VI Civil Rights Act 1964

Agree:

President Barack Obama Presidential Memorandum

President Obama SGMF Dedication

National Academy of Medicine Communities in Action Report

NPS plan Santa Monica Mountains ROTV

NPS plan San Gabriel Mountains National Monument

USACE L.A. River Plan

HUD L.A. State Historic Park

US Commission on Civil Rights

CA Government Code 11135

Title VI Civil Rights Act 1964

President's Executive Order 12898

1. **Describe what you plan to do** in terms that are understandable to communities.
2. **Analyze the benefits and burdens on all people.**

This can include numerical **disparities**, statistical evidence, anecdotal evidence, empirical studies and surveys, demographic data, GIS mapping, and financial analysis. Who benefits, and who's left behind?

Data needs to be collected and made publicly available for independent analyses. **Standards** need to be defined to measure progress, allow for midcourse corrections, and hold officials accountable.

The range of **values** to be analyzed includes, for example, physical, mental, and social health; economic vitality, jobs, and displacement; climate and conservation; culture, history, art, and spiritual values; and equal justice and democratic participation.

3. **Analyze alternatives** to what is being considered.
4. **Include people of color, low-income people, and other stakeholders at every step.**
5. **Develop an implementation plan to distribute benefits and burdens fairly, and avoid discrimination** - unnecessary discriminatory impacts, implicit bias, and intentional discrimination.



Planning, data, standards, progress, corrections, accountability

CA Prop 84 and AB 31 need not greed

88% of funds invested in **park poor, income poor** communities that are disproportionately **of color**

AB 31 worked

Vague standards like “local parks and urban greening” don’t work: 69% invested in disproportionately white, wealthy, park rich areas.

That’s backwards

“Simple justice requires that public funds, to which all taxpayers of all races contribute, not be spent in any fashion which encourages, entrenches, subsidizes, or results in racial discrimination.”

President John F. Kennedy, message to Congress on Title VI of the Civil Rights Act of 1964

**"We do not have to be lawyers to understand,
'Do unto others as you would have them do unto
you'"**

Senator Hubert Humphrey,
Senate Debate on Civil Rights Act of 1964

*Texas Department of Housing and Community Affairs
v. Inclusive Communities Project, **SCOTUS**, 2015*

Discriminatory impact standard regardless of intent is necessary to overcome legacy of residential segregation

Move the nation toward equal opportunity for all

Counteract unconscious prejudice, disguised animus, and implicit bias that escape easy classification as intentional discrimination

Fisher v University of Texas, **SCOTUS**, 2016

Data analysis race, color, and national origin

Ensure public benefits and burdens promote racial justice, human dignity, and diversity

The value of diversity:

Ending stereotypes

Promoting cross-racial understanding

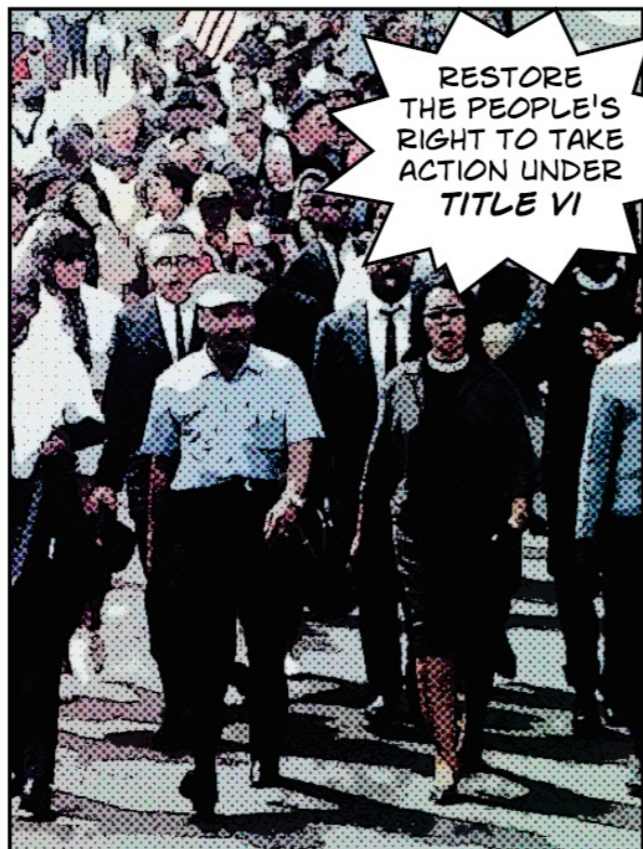
Preparing for increasingly diverse workforce and society

Cultivating leaders with legitimacy in the eyes of the public

Socioeconomic status not good enough

CELEBRATE THE CIVIL RIGHTS REVOLUTION

STRENGTHEN, DON'T ROLL BACK, CIVIL RIGHTS...



RESTORE THE PEOPLE'S RIGHT TO TAKE ACTION UNDER TITLE VI

THE SELMA TO MONTGOMERY MARCH PHOTO TILE IN CIVIL RIGHTS PARK, LOS ANGELES



THE NAACP LEGAL DEFENSE FUND (LDF) WON BROWN VS. BOARD OF EDUCATION IN 1954



FIGHT UNJUSTIFIED DISCRIMINATORY IMPACTS!

THE CITY PROJECT FIGHTS TO UPHOLD PEOPLE'S RIGHTS UNDER THE CIVIL RIGHTS ACT OF 1964, THE FAIR HOUSING ACT OF 1968, THE AFFORDABLE CARE ACT, AND EXECUTIVE ORDER 12898 ON ENVIRONMENTAL JUSTICE AND HEALTH...

THE CIVIL RIGHTS REVOLUTION INCLUDES ATTORNEYS WORKING IN AND OUT OF COURT, COURAGEOUS JUDICIAL DECISIONS, GRASS ROOTS ORGANIZING, LEGISLATION BY CONGRESS AND THE STATES, PRESIDENTIAL LEADERSHIP, IMPLEMENTATION BY AGENCIES, AND THE PEOPLE'S RIGHT TO **VOTE**.

THE STRUGGLE CONTINUES...

This work is supported in part by

Haynes Foundation

Surdna Foundation

Resources Legacy Fund

NIH-NIMHD grant U54MD007598 (formerly U54RR026138)

CDU-AXIS, Grant# U54MD007598 from NIMHD

Weingart Foundation

Gilbert Foundation

California Endowment

Kresge Foundation



Donations are tax deductible!

hello@cityprojectca.org

www.cityprojectca.org